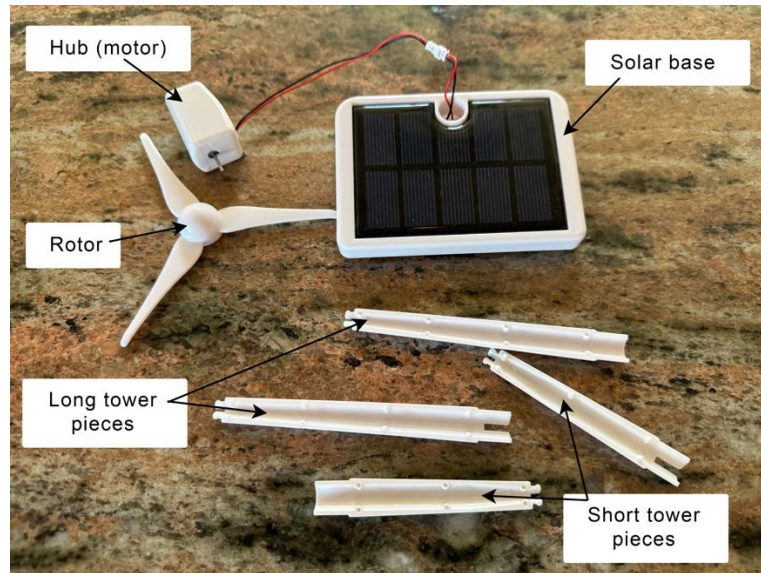
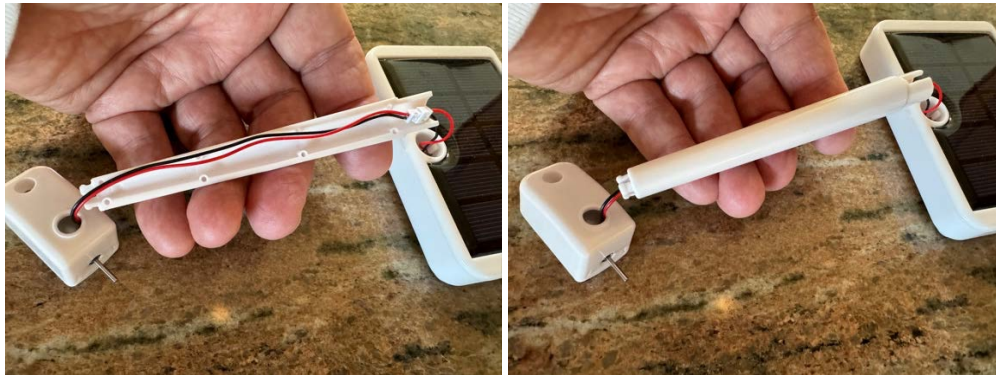


Assembling the solar windmill kit



1. Connect the hub (motor) wire connector to the connector from the solar base.
 - a. The connector may already be connected.
2. Choose two matching tower segments. Most people choose the taller (longer) ones.
 - a. The tower comes in two pieces, with two heights to choose from.
 - b. There are four pieces in total. You will use only two of them.



3. Lay the wires between the tower pieces with the connectors at the bottom.
4. Snap the two halves of the tower together with the wires inside.



5. Guide the excess wire into the solar base and snap the bottom of the tower into the hole in the base.
 - a. A notch on one side of the tower aligns with a guide in the base.



6. Snap the hub (motor) to the top of the tower.



7. Press the rotor onto the motor shaft.
8. Place the fully assembled windmill in direct sunlight and watch it spin!
9. Note that the adhesive pieces are only used if you wish to mount the windmill to a surface rather than let it stand on its own. Most people do not use them.